



# CERTIFIED SQUARE FOOTAGE REPORT

25716 SE 27TH ST  
Sammamish, WA 98075

## GROSS LIVING AREA (GLA)

- Floor 1 - 2533 sqft
- Floor 2 - 2312 sqft
- **Total - 4845 sqft**

### Excluded Area:

3 Car Garage - 981 sqft

## CERTIFIED SQUARE FOOTAGE

**4845 SQ FT**

accurate to at least 99.5%

## GROSS INTERNAL AREA (GIA)

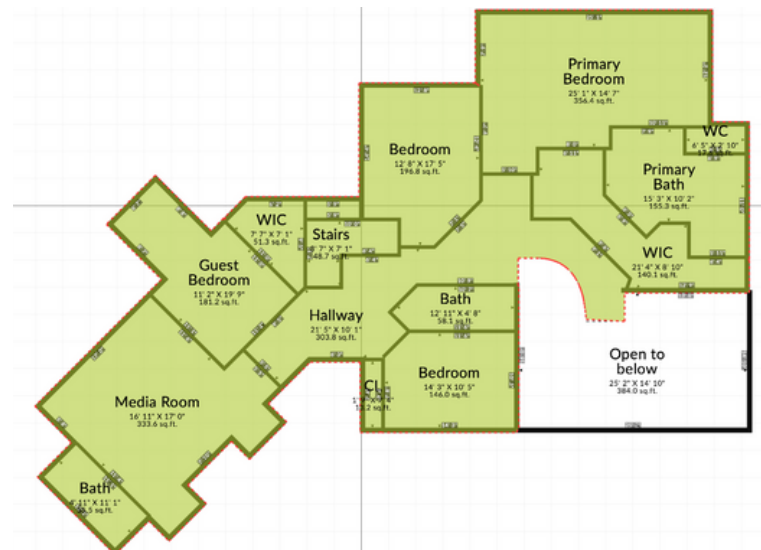
- Floor 1 - 2375 sqft
- Floor 2 - 2160 sqft
- **Total - 4535 sqft**

### Excluded Area:

3 Car Garage - 926 sqft

**GLA** = all areas in green including external walls using a standard 6.5 inch wall thickness

**GIA** = the interior footprint area excluding the external walls (i.e., paint to paint)







- **Gross Living Area - 2533 sqft**
- **Gross Internal Area - 2375 sqft**

**Excluded Areas:**

**3 Car Garage**

- **981 sqft external area**
- **926 sqft internal area**

GLA = all areas in green include external walls using a 6.5 inch wall thickness unless otherwise noted. The GLA calculation was created pursuant to: Square Footage-Method for Calculating: ANSI® Z765-2021 (American National Standards Institute®) measuring standard for measuring, calculating, and reporting above and below grade square footage. Floor plan created using a 3D property scan via a Matterport Pro camera and HomeDiary's 3D floor plan system.



## FLOOR 2

- **Gross Living Area - 2312 sqft**
- **Gross Internal Area - 2160 sqft**

### Excluded Areas:

**Open to Below - 384 sqft internal area**

GLA = all areas in green include external walls using a 6.5 inch wall thickness unless otherwise noted. The GLA calculation was created pursuant to: Square Footage-Method for Calculating: ANSI® Z765-2021 (American National Standards Institute®) measuring standard for measuring, calculating, and reporting above and below grade square footage. Floor plan created using a 3D property scan via a Matterport Pro camera and HomeDiary's 3D floor plan system.